



FL

FLEXIBLES

# VERTICAL PACKAGING SOLUTIONS THAT FIT



# YOUR PRODUCT. YOUR BUDGET. YOUR NEEDS.

## PACKAGING SOLUTIONS FOR OVER 40 YEARS

Rencco manufactures a full line of vertical packaging machinery and automated systems that create flexible packages and bags to suit your products and needs. Since 1969, companies around the world have depended on Rencco's automatic and semi-automatic solutions to package a wide variety of single, multiple and unusual shaped products. Rencco's fast, easy-to-use form, fill, and seal systems produce packages as small as two inches square up to 24"x 65", without the high cost of using pre-made bags. Rencco also designs and manufactures innovative product handling, counting, accumulating and feeding systems for complete automated solutions.

Versatile, reliable,  
cost-effective automation



501 model

## PRODUCTS INCLUDE:

- Baking Pans
- Baseballs
- Bath Soap
- Breathing Mask Kits
- Candy
- Card Decks
- Clothing
- Cups
- Deer Feeder Blocks
- Drawer Frame Kits
- Electronics
- Flatware
- Fresh Fruit
- Food Service Disposables
- Guitar Strings
- Hardware Kits
- Hospital Disposables
- License Plates
- Magazines
- Medical goods
- Multi-packs
- Oil Filter Kits
- Paint Brush
- Pencils
- Plastic Model Kits
- Plastic Tumblers
- Printer Ribbons
- Railings
- Razors
- Safety Glasses
- Screws
- Sports Equipment
- Stickers
- Textiles
- Twine

## THE RENNCO ADVANTAGE

Rennco's versatile machines deliver year-after-year reliability and value that simply can not be matched by other vertical baggers or options using pre-made bags.



## HERE IS THE RENNCO ADVANTAGE

- **Experience.** More than 5,000 packaging equipment solutions delivered to more than 1,400 customers in 47 countries.
- **Expertise.** Rennco engineering and technical support team excels at solving packaging challenges.
- **Support.** One of the leading reasons for Rennco's many repeat customers. Rennco stands behind all of their solutions with courteous, responsive customer support and comprehensive aftermarket services and parts. Rennco is also powered by ProMach, one of the largest designers and manufacturers of packaging equipment.
- **Versatility.** Rennco machines easily adjust to run multiple product sizes and shapes. Rennco machines operate efficiently as part of a fully automated system or as a stand alone component.
- **Reliability.** Heavy-duty construction and design provides reliable service 24/7, year after year.
- **Innovation.** Rennco's innovative low energy and constant-coated seal system provides smokeless, odorless package sealing with less material buildup. The uptime seal-jaw assembly provides precise tool-less adjustment, consistent repositioning and improved performance.
- **Value.** Small footprint, high efficiency, and savings on material cost over pre-made bags provide years of value and low total cost of ownership.



Vertical packaging solutions designed to meet your needs and product requirements

# MODEL 201

## FEATURES AND BENEFITS

- Versatile packager for smaller products up to 8"x 10"
- Small footprint pouch pack/kit packing system
- Significant cost savings over pre-made bags
- Easily interfaced with infeed systems
- Many available options

SPECIFICATIONS	MODEL 201/201PP
<b>Machine Dimensions</b>	26" w x 29" d x 56" h (66 cm x 74 cm x 142 cm)
<b>Standard Vertical Seal</b>	8" (20.3 cm)
<b>Standard Horizontal Seal</b>	10" (25.4 cm)
<b>Standard Jaw Opening</b>	4-1/2" (11.4 cm)
<b>Electrical Requirements</b>	110 v, 60 HZ, 1 ph, 8-14 amps*
<b>Air Requirements</b>	.12 CFM per machine cycle at 80 PSI**



# MODEL 301

## FEATURES AND BENEFITS

- Versatile packager for medium sized products up to 18"x 24"
- Easy to operate with quick, easy changeover
- Significant cost savings over pre-made bags
- User-friendly HMI and programmable changeover
- Easily interfaced with infeed systems
- Wide range of available options

SPECIFICATIONS	MODEL 301	MODEL 301 PP
<b>Machine Dimensions</b>	60" w x 56" d x 75" h (152.4 cm x 142.24 cm x 190.5 cm)	60" w x 56" d x 75" h (152.4 cm x 142.24 cm x 190.5 cm)
<b>Standard Vertical Seal</b>	14" (35.6 cm)	14" (35.6 cm)
<b>Standard Horizontal Seal</b>	20" (50.8 cm)	18" (45.7 cm)
<b>Standard Jaw Opening</b>	5-1/2" (14 cm)	5-1/2" (14 cm)
<b>Electrical Requirements</b>	110 v, 60 HZ, 1 ph, 8-14 amps*	110 v, 60 HZ, 1 ph, 8-14 amps*
<b>Air Requirements</b>	.16 CFM per machine cycle at 80 PSI**	.16 CFM per machine cycle at 80 PSI**



\* Special electrics available upon request  
 \*\* CFM will vary depending on added options



# MODEL 501

## FEATURES AND BENEFITS

- Versatile packager for large products
- Available in three different size configurations up to 24"x 65" in length
- User-friendly HMI and programmable changeover
- Significant cost savings over pre-made bags
- Easy to operate with quick, easy changeover
- Easily interfaced with infeed systems
- Widest range of features and options



SPECIFICATIONS	MODEL 501-36/501-36PP	MODEL 501-52/501-52PP	MODEL 501-65
<b>Machine Dimensions</b>	34-1/2" w x 63" d x 68-1/2" h (88 cm x 160 cm x 174 cm)	34-1/2" w x 82" d x 68-1/2" h (88 cm x 208 cm x 174 cm)	34-1/2" w x 98-1/2" d x 68-1/2" h (88 cm x 250 cm x 174 cm)
<b>Standard Vertical Seal</b>	14" (35.6 cm)	14" (35.6 cm)	14" (35.6 cm)
<b>Standard Horizontal Seal</b>	36" (91 cm)	52" (132 cm)	65" (165 cm)
<b>Standard Jaw Opening</b>	5-1/2" (14 cm)	5-1/2" (14 cm)	5-1/2" (14 cm)
<b>Electrical Requirements</b>	220/240 v, 60 HZ 1 ph, 7-1/2-8 amps*	220/240 v, 60 HZ 1 ph, 7-1/2-8 amps*	220/240 v, 60 HZ 1 ph, 8-1/2-9 amps*
<b>Air Requirements</b>	.43-.60 CFM at 80 PSI**	.43-.60 CFM at 80 PSI**	.43-.60 CFM at 80 PSI**

# VOYAGER

## FEATURES AND BENEFITS

- Fully automatic vertical packager up to 60 packages/minute
- User-friendly HMI and programmable changeover
- Operator interface panel on a swivel arm that is easy to navigate and has easy to change machine settings
- Durable construction ready for production 24/7
- Servo driven film feed and adjustable film guide provides easy tool-less changeover
- Versatile packager for sizes up to 18"x 32"

SPECIFICATIONS	VOYAGER
<b>Machine Dimensions</b>	54" w x 48" d x 70-3/4" h (137 cm x 131.9 cm x 179.5 cm)
<b>Packing Speeds</b>	up to 60 packages/min based on product size
<b>Standard Vertical Seal</b>	14" (35.6 cm)
<b>Standard Horizontal Seal</b>	24" (60.8 cm)
<b>Standard Jaw Opening</b>	4-1/2" (10.2 cm)
<b>Electrical Requirements</b>	220/240 v, 60 HZ, 1 ph, 8-14 amps*
<b>Air Requirements</b>	.16 CFM per machine cycle at 80 PSI**



# E-PAC

## FEATURES AND BENEFITS

- All electric - no compressed air
- Quiet operation
- 110 v plug in anywhere convenience
- User-friendly HMI and programmable changeover
- Servo seal jaw operation
- Servo film feed operation

SPECIFICATIONS	MODEL E-PAC
<b>Machine Dimensions</b>	46" w x 40" d x 62-1/4" h (101.6 cm x 116.84 cm x 158.12 cm)
<b>Standard Vertical Seal</b>	14" (35.6 cm)
<b>Standard Horizontal Seal</b>	20" (50.8 cm)
<b>Standard Jaw Opening</b>	2" (5.08 cm) to 7" (17.78 cm)
<b>Electrical Requirements</b>	110 v, 60 HZ, 1 ph, 12 amps*
<b>Air Requirements</b>	None

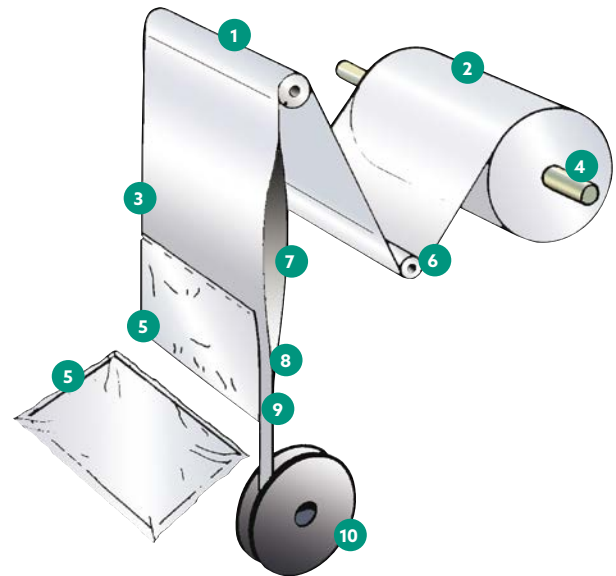


FEATURES AND OPTIONS	MODEL				
	201	301	501	VOYAGER	E-PAC
<b>Constant Coated Seal System</b>	S	S	S	N/A	O
<b>Tri Bar Seal System</b>	N/A	O	O	S	S
<b>Low Energy Seal System</b>	N/A	O	O	N/A	N/A
<b>Uptime Seal Jaw</b>	O	S	S	S	S
<b>Adjustable Jaw Opening</b>	N/A	O	O	N/A	S
<b>Tool-less Film Guides</b>	N/A	S	S	S	S
<b>Leg &amp; Height Adjustments</b>	S	S	S	S	S
<b>Casters</b>	S	S	S	S	S
<b>Multiple Control Platforms</b>	N/A	O	O	N/A	N/A
<b>Light Screen Cycling Mechanism &amp; Perimeter Interlocked Guarding</b>	S	S	S	S	S
<b>Jaw Guards</b>	O	O	O	O	O
<b>Discharge Conveyors</b>	O	O	O	O	O
<b>Pin Perforator</b>	O	O	O	O	S
<b>Electric Eye Film Registration</b>	O	O	O	O	O
<b>Header Sealer</b>	O	O	O	O	O
<b>Static Eliminator</b>	O	O	O	O	O
<b>Hole Punch</b>	O	O	O	O	N/A
<b>Film Cart</b>	N/A	O	O	O	N/A
<b>Powered Film Cradle</b>	N/A	O	O	S	N/A
<b>Trim Break Detection Eye</b>	O	O	O	O	N/A
<b>Trim Wind Up</b>	S	S	S	S	S
<b>Large Trim Wind Up</b>	N/A	O	O	O	N/A
<b>Spare Assemblies &amp; Parts Kits</b>	O	O	O	O	O
<b>Servo Film Feed</b>	O	O	O	S	S

Key: S=Standard, O=Optional, NA=Not Applicable

## EASY FILM CHANGEOVER

A or B wind material can be used on any of the Rencco vertical models. Bag size changeover is accomplished by simply changing roll stock to the desired width, and adjusting the vertical adjustment wheel, or control, for different lengths.



- |                       |                    |                 |
|-----------------------|--------------------|-----------------|
| 1 Feed roller         | 5 Finished package | 9 Vertical seal |
| 2 Roll stock material | 6 Guide roller     | 10 Trim take-up |
| 3 Horizontal seal     | 7 Load product     |                 |
| 4 Roll stock arbor    | 8 Trim             |                 |

# TECHNICAL SUPPORT AND SERVICE

## Ensuring All Production Expectations Are Met

### PACKAGING SOLUTIONS FOR OVER 40 YEARS

- **Installation and Start Up of New Equipment.** Experienced Rennco technicians provide assistance in setting up and testing in your plant to ensure all production expectations are met.
- **PMMI Certified Training.** We train in your plant, on your equipment.
- **Follow-Up Training.** Our technicians are available any time after the initial installation for follow-up training for new employees or to provide new information and techniques.
- **System Upgrades.** Rennco offers general or application-specific equipment upgrades. Some examples include PLC and electrical controls, servo-linear actuators, and seal assemblies, as well as adding basic packager options.
- **Product Handling.** Rennco offers automated product handling solutions for your existing packager. These include conveyors, product infeed mechanisms, and discharge systems.
- **Machine Repair and Service.** Rennco technicians provide timely repair assistance and general machine service. They offer equipment evaluations, assistance in achieving maximum production rates, and recommendations for upgrades and maintenance schedules.
- **Refurbishing Packagers or Entire Systems.** Cost effective and warranted factory refurbishing is available for most Rennco equipment.

### AFTER-MARKET CUSTOMER SERVICES

- **Competent Phone Service.** Trouble shooting support for everything from mechanical adjustments to electrical controls, PLC programming, and recommended maintenance. Contact us at 800-701-1343.
- **Parts Sales.** Rennco takes pride in our responsive and supportive parts department. Most orders are shipped the same day and arrive at your door the next day, if required.
- **After Hours Support.** Call 517-449-8901 after 5 pm ET to speak with a service technician.





Manufacturers of consumer and food service disposables, hardware, consumer goods, medical goods, and industrial laundry services rely on Rennco for high-performance automatic and semi-automatic vertical bagging systems. As part of the ProMach Flexibles business line, Rennco helps our packaging customers protect and grow the reputation and trust of their consumers. ProMach is performance, and the proof is in every package.

300 Elm St  
Homer, MI 49245  
TOLL FREE: 800-409-5225  
INTERNATIONAL: 517-568-4121  
F: 517-568-4798  
E: [Rennco@ProMachBuilt.com](mailto:Rennco@ProMachBuilt.com)  
[Rennco.com](http://Rennco.com)